

## Fun Filled Energisers



### ZOMBIE ESCAPE

The Zombie Escape Team Activity is an exhilarating team-building challenge where participants must work together to solve puzzles and escape a simulated zombie outbreak. It promotes collaboration, quick thinking, and effective communication under pressure.



### PERFECT SQUARE

The Perfect Square Activity is an engaging team-building exercise designed to enhance communication, collaboration, and leadership skills. In this activity, participants form a circle and are blindfolded, then given a rope to create a perfect square without visual input.



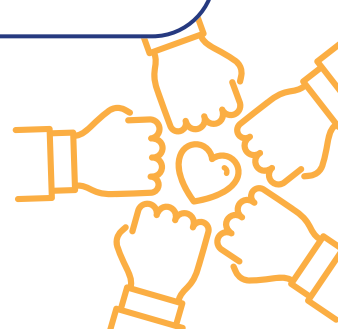
### SPEED DATING

This activity is designed to help team members break the ice, foster connections, and learn fun or meaningful details about their colleagues in a fast-paced and interactive format.



### HELIUM STICK

The Helium Stick Activity is a team-building exercise that emphasizes coordination and communication. Teams must work together to lower a lightweight stick to the ground, fostering collaboration and problem-solving skills.








## Blind Fold Fun



### MINEFIELDS

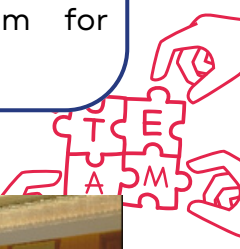


The Minefield Team Activity challenges participants to navigate a minefield blindfolded, relying on their teammates' guidance. This exercise enhances communication, trust, and strategic thinking within the team.



### TRUST FALL

The Trust Fall is a classic team-building activity that strengthens trust and collaboration among team members. Participants take turns falling backward into the arms of their teammates, relying on them for support and safety.





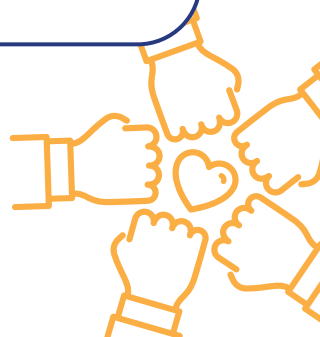
### PLANK WALK

Balance, trust, and teamwork are put to the test! In this physically engaging activity, team members must work together to navigate a narrow "plank" or balance beam, relying on each other for support and stability.

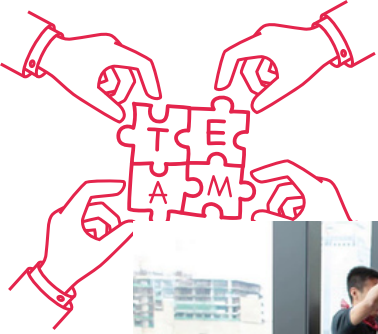


### LEAD FROM THE BACK

Here team members will be blindfolded and must rely on verbal instructions from a leader to navigate a predetermined course. This exercise enhances team cohesion, communication skills, and builds trust among participants.







## Fun Filled



### TALLEST TOWER

This engaging team-building exercise is designed for workplace settings. Teams will work together to construct the tallest possible tower, promoting collaboration, innovation, and strategic thinking.



### ACID RIVER

The River Crossing Team Activity challenges groups to strategize and collaborate to navigate an imaginary river using limited resources. This exercise emphasizes problem-solving, teamwork, and effective communication.



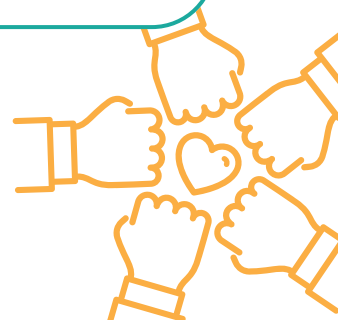
### CROSS OVER

The Cross Over Lava Team Activity challenges participants to strategize and work together to navigate a simulated lava field using limited resources, emphasizing teamwork, problem-solving, and quick decision-making under pressure.



### CATERPILLAR RACE

The "Caterpillar Race" is a dynamic and entertaining team-building activity that requires participants to work together in a coordinated manner to move as a single unit, much like a caterpillar.





## The Quest



### MAX STRETCH

The primary goal of the Circle Challenge is to provide a dynamic and enjoyable team-building experience. Participants will work together to collect as many balls as possible without entering a designated circle.



### OPERATION BOSS RESCUE

Escape the Boss is a thrilling team-building activity where participants must work together to complete various levels, ultimately freeing their boss from chains and locks.



### MISSION IMPOSSIBLE

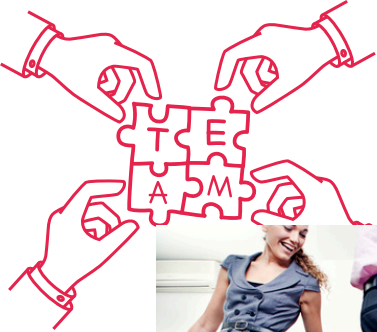
This activity is an exhilarating challenge where team members work together to achieve a common goal. Where one team member being supported by their peers using a band or rope as they navigate and collect milestones.



### EGG DROP

The Egg Drop Team Activity is a creative challenge where teams design protective structures to prevent an egg from breaking when dropped, promoting innovation, teamwork, and problem-solving skills.





## GRAB YOUR CHAIR

This is a thrilling twist on the classic musical chairs game, adding an element of surprise and laughter. Participants navigate the activity blindfolded, guided by the sounds and instructions from their teammates, making it a fun and engaging team-building exercise.



## PASS THE BATTON

In The Baton Challenge, teams compete to pass the baton through a series of creative and strategic formations. Each round introduces new restrictions, testing your team's adaptability and coordination while fostering collaboration and problem-solving.



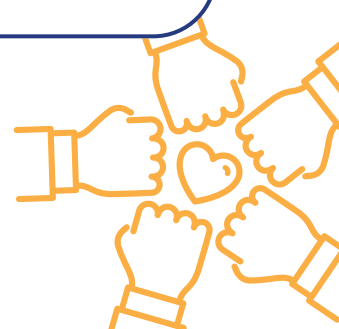
## KEY PUNCH

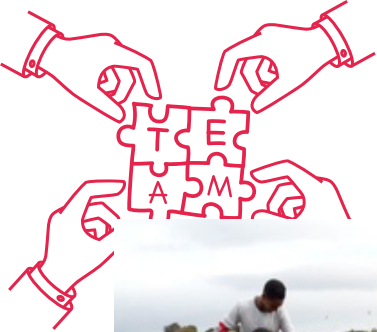
The Key Punch team activity challenges groups to enhance their teamwork, communication, and problem-solving skills by working together to touch numbered spots in sequence as quickly as possible. This high-energy exercise emphasizes the importance of strategy and cooperation.



## FROSTBITE

The Frostbite Team Activity challenges participants to work together under pressure, simulating an Arctic survival scenario. It emphasizes problem-solving, teamwork, and effective communication in high-stress situations.





## Crossing Challenge



### SHRINKING VESSEL

Shrinking Vessel is a dynamic team-building activity that challenges participants to adapt, collaborate, and strategize as keeps shrinking. Teams must work together to fit into the decreasing area, emphasizing creativity, trust, and communication under pressure.



### HUMAN BRIDGE

The Human Bridge Activity is a team-building exercise that fosters collaboration, trust, and communication. By forming a human bridge, participants experience the importance of mutual support and unity in achieving shared goals.



### RAFT BUILDING

Raft Building is a hands-on, adventurous team-building activity that requires participants to design, construct, and potentially navigate a raft using limited materials.



### LADDER CROSSING

The Ladder Crossing Team Activity challenges participants to work together to cross a gap using only planks, emphasizing problem-solving, cooperation, and strategic thinking.

